



CAMION[®]
CONQUER EVERY STORM.



2026-2027 SNOWFIGHTING LINEUP



Ice Master T-Series	4
Ice Master T-Series Max	8
PowerPak	14
Storm Fightr	16
Storm Commander	18
Ice Master Compact Sprayers	22
Brine Master	26
Brine Transport Tanks	28
Brine Storage Tanks	32
Relocatable Brine Storage	34
Diesel Transfer Tanks	36
Warranty	39

T-SERIES



Own The Streets

Engineered, tested, and sold in the nation's coldest temperatures, the Ice Master T-Series is the ultimate snowfighting tool. With tank capacities ranging from 250 to 995 gallons, you'll have the exact payload you need to Conquer Every Storm.

AUTO-DRAIN SUMP BASE

The sloped tank base channels every ounce of brine to the drain.

FAST-FILL SYSTEM

Quickly attach and fill, so more time can be spent on the job.

RUST-ARMOUR STAINLESS FRAME

No rust. No corrosion. Years of unmatched service.

BAFFLE-BALL SURGE CONTROL

The slosh is eliminated, so it feels like a solid load.



T-SERIES

MODELS

PRODUCT CODE	LENGTH	WIDTH	HEIGHT	DRY WEIGHT (LBS)	CAPACITY (GAL)
IMT250TF	81"	48"	39"	475	250
IMT300TF	102"	48"	40"	560	300
IMT500TF	104"	57"	50"	700	500
IMT800TF	120"	61"	59"	935	800
IMT995TF	120"	61"	75"	1035	995

CUSTOMIZE YOUR T-SERIES



PUMPS

REFER TO PAGE 14

SPRAY BOOM

REFER TO PAGE 16



CONTROLS

REFER TO PAGE 18

T-SERIES

SPECIFICATIONS

FRAME TYPE	COLOR	MOUNTING	TANK TYPE
Stainless Steel	Safety Orange	4 Tie-Down Slots	Single-Piece, Roto Mold HDPE

PUMPS

PRODUCT CODE	PowerPak	MAX OPEN FLOW (GPM)	PRESSURE (PSI)	MOTOR
IMSESC01	Electric	52	35	12 VOLT DC
IMSGSC01	Gas	190	60	Gas
IMSHSC01	Hydraulic	200	120	Hydraulic

CONTROLS

PRODUCT CODE	DESCRIPTION	SPRAY ZONES	POWER
IMTC	In Cab Standard Controller	3	12 Volt
IMTCSC	Storm Commander™ Controller	3	12 Volt

SPRAY BOOMS

PRODUCT CODE	SPRAY WIDTH	DRY WEIGHT (LBS)	MAX SPRAY VOLUME (GPM)
IMB12	Up to 30'	94	45
IMB22	Up to 30'	98	132



T-SERIES MAX



Empowering Large-Scale Operations

Custom-built for large-scale needs and engineered to withstand the coldest conditions, the T-Series Max offers unmatched capacity and customization, ensuring your snowfighting operation is always prepared to face the storm.

FAST-FILL SYSTEM

Quickly attach and fill, so more time can be spent on the job.

CUSTOM ENGINEERING

Completely customizable with a wide range of combinations for your workload.

AUTO-DRAIN SUMP BASE

The sloped tank base channels every ounce of brine to the drain.

BAFFLE-BALL SURGE CONTROL

The slosh is eliminated, so it feels like a solid load.

RUST-ARMOUR STAINLESS FRAME

No rust. No corrosion. Years of unmatched service.

*BAFFLE BALLS ARE INCLUDED WITH T-SERIES MAX SPRAYERS.



T-SERIES MAX

MODELS

PRODUCT CODE	LENGTH	WIDTH	HEIGHT	DRY WEIGHT (LBS)	CAPACITY (GAL)
IMT1200TF	127"	72"	66"	1,250	1,200
IMT1600TF	156"	72"	70"	1,495	1,600
IMT1900TF	156"	72"	75"	1,598	1,900
IMT2200TF	156"	72"	87"	1,688	2,200
IMT2500TF	159"	87"	84"	2,040	2,500
IMT3000TF	159"	87"	99"	2,295	3,000

SPECIFICATIONS

FRAME TYPE	COLOR	MOUNTING	TANK TYPE
Stainless Steel	Safety Orange	4 Tie-Down Slots	Single-Piece, Roto Mold HDPE

PUMPS

PRODUCT CODE	DESCRIPTION	MAX OPEN FLOW (GPM)	PRESSURE (PSI)	MOTOR
IMSESC01	160 Electric Start Gas Pump	190	60	Gas
IMSHSC01	200 Stainless Steel Hydraulic Pump	200	120	Hydraulic

CONTROLS

PRODUCT CODE	DESCRIPTION	SPRAY ZONES	POWER
IMTC	In Cab Standard Controller	3	12 Volt
IMTCSC	Storm Commander Controller	3	12 Volt

SPRAY BOOMS

PRODUCT CODE	SPRAY WIDTH	DRY WEIGHT (LBS)	MAX SPRAY VOLUME (GPM)
IMB12	Up to 30'	94	45
IMB22	Up to 30'	98	132

T-SERIES MAX

ROLL-OFF UNIT



Your Operation's Secret Weapon

Designed as a larger capacity option to our T-Series sprayer, the T-Series Max Roll-Off Unit offers expanded brine capacity to cater to the specific needs of any snowfighter. With a focus on adaptability, snowfighters can build their own roll-off unit from the ground up, ensuring every component aligns with their operational requirements.

Its roll-off functionality allows seamless integration with your snowfighting fleet. Whether it's transitioning between jobs or relocating to higher priority areas, the T-Series Max Roll-Off Unit makes brine spraying easy and reduces downtime.

Engineered, tested, and sold in the toughest winter conditions, the T-Series Max Roll-Off Unit guarantees reliability and durability when it matters most. Trust in Camion's legacy of dependability to keep your operation ahead of the storm.



T-SERIES

ACCESSORIES

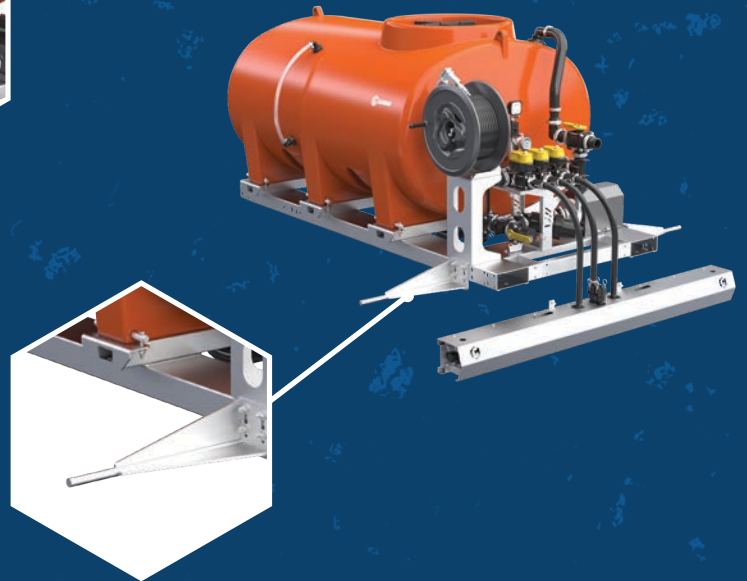
100' HOSE REEL & SPRAY GUN

PRODUCT CODE: IMTHR01



TAILGATE LOCK BARS

PRODUCT CODE: IMTMT02



SELF-LOADING LEGS

PRODUCT CODE: IMTLS02 (500 - 995 GAL)
2" Stainless Steel Tubular Legs

PRODUCT CODE: IMTLS03 (500 - 3,000 GAL)
4" Stainless Steel Tubular Legs



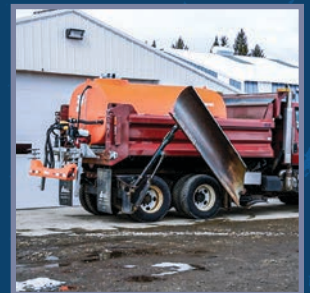
STEP 1



STEP 2



STEP 3



STEP 4

T-SERIES

ACCESSORIES

HOSE REEL RISER BRACKET

PRODUCT CODE: IMTHRS01



ADJUSTABLE RECEIVER HITCH

PRODUCT CODE: IMMBR01



ADJUSTABLE BOOM BRACKET

PRODUCT CODE: IMMB02



FOLDING BOOM BRACKET

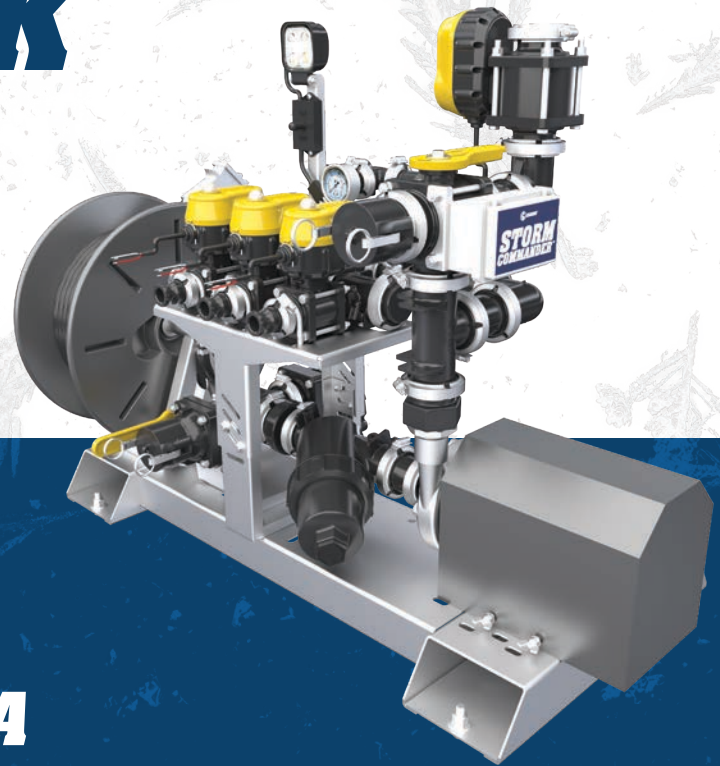
PRODUCT CODE: IMMBF03 (22" WIDE)

PRODUCT CODE: IMMBF04 (35" WIDE)





POWERPAK™



Turn Any Tank Into A Professional Powerhouse

The compact power unit that brings professional-grade liquid application to your existing tank setup. Built to be mounted in minutes and run for years, this unit is engineered for snow and ice contractors who want serious performance without the bulk.

ULTRA-COMPATIBLE DESIGN

Mounts easily to any existing tank frame with minimal install time. No custom fabrication. No hassle.

STORM COMMANDER™ READY

Upgrade with the Storm Commander in-cab control system for total command over application rates, zone control, and much more—right from the driver's seat.

RUST-ARMOUR STAINLESS STEEL FRAME

Zero rust. Zero corrosion. Built to endure salt, slush, and seasons of abuse without compromise.

YOUR CHOICE OF POWER

Available with Gas, Electric, or Hydraulic motor configurations to match your setup and workflow.

ECOMAX PUMP

- Quiet
- Efficient
- Safe
- Eco-friendly



POWERPAK

SPECIFICATIONS

FRAME TYPE	LENGTH	WIDTH	HEIGHT	WEIGHT	MOTOR	HOSE LENGTH	SPRAY GUN TYPE
Stainless Steel	42"	22"	36"	270 lbs	Electric, Gas, Hydraulic	100'	Adjustable Jet/Fan

INSTALL KIT INCLUDES

PRODUCT CODE	DESCRIPTION	QTY
1002715	90° Female Coupler 2-inch Hose Shank	1
1003084	2-inch x 4-foot Enforcer Fertilizer Hose	1
1001456	2-inch Full Port Flange x 2-inch Hose Barb	1
1002664	2-inch Full Port Flange x 2-inch Hose Barb 45°	1
1001997	2-inch Full Port Flange x 2-inch Hose Barb 90°	1
1000255	2.31-inch x 2.65 inch x 0.75-inch T-Bolt Clamp	2
1002718	2-inch Full Port Manifold Gasket with Rib EPDM	1
1002350	2-inch Full Port Worm Screw Clamp	1

OPTIONS



POWERPAK ECOMAX
PRODUCT CODE: IMSESC01



POWERPAK GAS
PRODUCT CODE: IMSGSC01



POWERPAK HYDRAULIC
PRODUCT CODE: IMSHSC01

*GPS MODEL SHOWN. AVAILABLE IN BOTH GPS AND NON-GPS.

STORM FIGHTR™



*IMB22 SHOWN

This Boom Doesn't Back Down

Forged from stainless steel, the Storm Fightr Armored Boom was built from the ground up to defeat anything you can throw at it, from corrosion to getting backed into the toughest snow pile. Your spray nozzles have never been as secure.

TRI-ZONE SPRAY SELECTION

Easily select left, right, and center spray channels.

EVEN-COVER NOZZLES

Nozzles are evenly spaced, so you don't miss an inch.

ICE-SLAYER NOZZLE

Spray up to 132 gallons per minute on select Storm Fightr™ models.

IMPACT-SHIELD SPRAYER GUARD

A built-in stainless steel shield defends your nozzles from impact.



STORM FIGHTR

SPECIFICATIONS

Product Code	Spray Width	# of Spray Nozzles	Dry Weight (LBS)	Max Spray Volume (GPM)
IMB12	Up to 30°	12	94	45
IMB22	Up to 30°	22	98	132



STORM COMMANDER®



Your In-Cab Command Center

The Storm Commander gives you the real-time data you need to beat billing disputes, frivolous litigation, and logistics breakdowns. It tracks application rates, GPS tracks, and much more, and backs it all up to an easy-to-use web portal. And it all comes in a rugged wireless package, complete with physical buttons and steel switches.

AIR-TETHER WIRELESS CONTROL

A fully wireless in-cab connection makes this unit easy to install before an event and more rugged than wired units.

WEB DASHBOARD

Get access to real-time datapoints, GPS tracks, dash cam feeds, on-site MiniRWIS cameras, and diagnostics, all in one dashboard.

SWIFT-ASSIST DIAGNOSTICS

Access on-demand help and speed up field repairs with real-time controller diagnostics.

CLOUD-INTEGRATED HD DASH CAM*

Integrated dashcams give you live feeds of roads, properties, spray patterns, and drivers. Instant cloud backups archive your footage for later use in billing disputes and litigation defense.

POINT-LOCK GPS TRACKING

See where your trucks go in real time and save routes for billing and litigation protection.

RUGGED-SWITCH INTERFACE

Built around tough buttons and toggle switches that respond to every command, gloved or not, even on the coldest nights.

INSTANT-SYNC WEB CONNECTION

Operational data gets uploaded to the cloud in real time.

BUILT FOR SNOWFIGHTING

This unit was built from the ground up for winter and displays the data you need for efficient operations, as well as billing and liability protection.





SNOWFIGHTER NATION

Snowfighting isn't just a job; it's a mission—a calling to serve our communities when faced with the coldest weather conditions. You rush into storms, snow, and ice, making it possible for emergency services, commuters, and our communities to function smoothly.

Each snowfighter brings their own unique approach to the table, blending technical expertise with practical experience to develop innovative solutions tailored to their specific challenges. This is what makes the snowfighting community a diverse and dynamic one. At Camion, we recognize the value of this diversity, which is why we've created Snowfighter Nation.

Our event series and online platform provide snowfighters a forum to share their experiences, exchange ideas, and learn from certified professionals in the field. At Camion, we empower snowfighters and equip them with the tools they need to conquer every storm.

Snowfighters, we salute you.



H-SERIES



*100' HOSE REEL
SHOWN IS OPTIONAL.

Heavy-Duty Engineering Done Safe

The Ice Master® H-Series hitch-mounted sprayer is built with Safe-Balance™ technology, reducing sloshing and stabilizing weight for your compact tractor.

EASY-ACCESS LID

The easy-to-reach lid located at the side of the tank makes filling quick and simple.

POLY-FLEX HOSE REEL

Unlike steel, this rust-free, crack-proof poly hose reel will flex.

SAFE-BALANCE DESIGN

The tank shape shifts weight closer to the rear wheels, making spraying on sloped terrain safer.

SOLID-WALL TANK CONSTRUCTION

With thick side walls, this workhorse is impact resistant and virtually indestructible.

TIME-SAVER FORK POINTS

The built-in fork slots make the entire unit a breeze to lift and load.

DOUBLE SPRAY BAR SYSTEM

High volume pre- and post- treatment spray bars.



H-SERIES

SPECIFICATIONS

PRODUCT CODE	CAPACITY (GAL)	SPRAY WIDTH	FRAME TYPE	COLOR	HOSE LENGTH	MOUNTING	DIMENSIONS	SPRAY GUN TYPE
IMT050	50	(Up to 6') Boom: IMB7	Stainless Steel	Safety Orange	15'	3-Point Linkage Hitch	50 Gallons L x W x H 32" x 55" x 43"	Adjustable Jet/ Fan

OPTIONS



100' HOSE REEL



RECEIVER HITCH



U-SERIES



Turn Your UTV Into A Snowfighting Machine

Arm your side-by-side with a 100-gallon full-drain tank and a reliable two-bar boom sprayer with our Ice Master® U-Series sprayer. Jam-packed with top-of-the-line features, the U-Series turns your UTV into a snowfighting beast.

POLY-FLEX HOSE REEL

Unlike steel, this rust-free, crack-proof poly hose reel will flex.

AUTO-DRAIN SUMP BASE

The sloped tank base channels every ounce of brine to the drain.

EASY-ADJUST BOOM MOUNTS

Quickly set the boom height to match the spray nozzles' recommended height.

RUST-ARMOUR STAINLESS FRAME

No rust. No corrosion. Years of unmatched service.

TIME-SAVER FORK POINTS

The built-in fork slots make the entire unit a breeze to lift and load.

DOUBLE SPRAY BAR SYSTEM

High volume pre- and post- treatment spray bars.



U-SERIES

SPECIFICATIONS

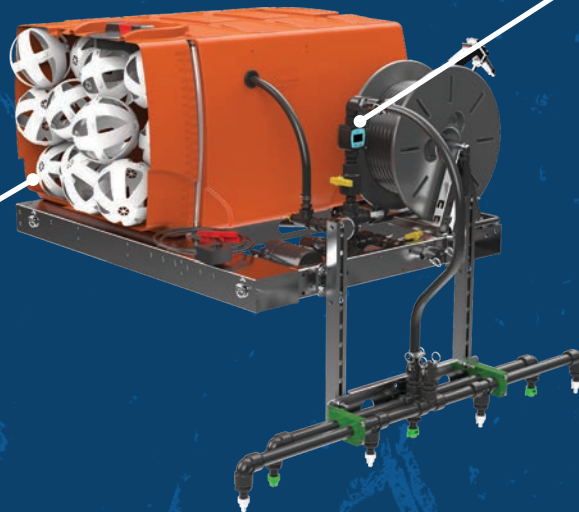
PRODUCT CODE	CAPACITY (GAL)	SPRAY WIDTH	FRAME TYPE	COLOR	HOSE LENGTH	MOUNTING	DIMENSIONS	SPRAY GUN TYPE	FLOW METER
IMT100	100	(Up to 6') Boom: IMB7	Stainless Steel	Safety Orange	100'	4 Tie-Down Slots	100 Gallons L x W x H 49" x 45" x 27"	Adjustable Jet/ Fan	Optional

OPTIONS



7.5" BAFFLE BALLS

PRODUCT CODE: AVB195



FLOW METER

PRODUCT CODE: ARFD01



BRINE MASTER®



The Ultimate All-In-One Brine Maker

The Brine Master® includes an integrated mixing tank and a unique all-in-one construction, giving you everything you need to jump-start your in-house brine production. And it's built tough, with a stainless frame and no finicky automated sensors to go down when you need it most.

CENTRAL CONTROL STATION

All your valves are in one place to make operating the Brine Master a breeze.

TIME-SAVER FORK POINTS

Built-in fork points make your unit easy to move in and out of storage.

***SALT-EXACT SALINITY READER**

Our upgraded refractometer salinity reader gives you hyper-accurate brine salinity readings.

***FLOW METER**

A flow meter comes standard so you can easily monitor your flow rate.

***FULLY DRAINABLE HOPPER**

Built for easy maintenance, with a fully-drainable hopper for hassle-free cleaning.

ALL-IN-ONE COMPLETE UNIT

A complete unit with all the components. No shopping for further items.

*FEATURES ONLY APPLICABLE TO THE BRINE MASTER 3,000.



BRINE MASTER

SPECIFICATIONS

MODEL	PRODUCT CODE	FRAME TYPE	BRINE PRODUCTION	DIMENSIONS (L x W x H)	TANK TYPE	HOPPER VOLUME	MIXING TANK CAPACITY
BRINE MASTER 1,600 (Gas* or Electric)	BM1600	Stainless Steel	UP TO 1,600 GAL/HOUR	90" x 68" x 72"	Single-Piece, Roto Mold HDPE	0.5 Cu Yards	400 GAL
BRINE MASTER 3,000	BM3000	Stainless Steel	UP TO 3,000 GAL/HOUR	181" x 65" x 82"	Single-Piece, Roto Mold HDPE	2 Cu Yards	600 GAL

*STAINLESS-STEEL TANK TIE-DOWNS ARE PROVIDED ON THE BRINE MASTER 1,600 GAS MODEL ONLY.

OPTIONS



BRINE MASTER 1,600 (GAS)



BRINE MASTER 1,600 (ELECTRIC)



BRINE MASTER 3,000



BRINE TRANSPORT TANK



Take Your Brine on The Road

Other drivers can't miss our high-vis orange tanks. Baffle balls keep unpredictable sloshing to a minimum, and our patented pin-mount system is a safe, low-maintenance alternative to traditional mounting systems.

*BAFFLE BALLS ARE OPTIONAL.

ANTI-SPLASH STAINLESS LID

Lockable and spill-proof, this lid keeps liquid in while traveling on rough terrain.
(ONLY ON TANKS 1,600 GAL OR LARGER.)

LIFTING-LUGS

Built-in and engineered to take the dry weight of the tank, these make lifting the tank on and off the trailer a breeze.

THICK-WALL DESIGN

Extra-thick walls provide unmatched strength and durability.

PIN-MOUNT SYSTEM

The molded-in mounting lugs combined with heavy-duty steel pins will keep this tank fixed without movement.

SINGLE-PIECE CONSTRUCTION

Rotationally-molded in a single mold means that the tank is seamless, water-tight, and leak-proof.

ROTO-MOLD CONSTRUCTION

When cooked and cooled at an even rate, the raw material is bonded together to make this tank virtually indestructible.



BRINE TRANSPORT TANK

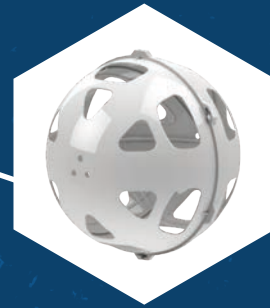
SPECIFICATIONS

PRODUCT CODE	SIZE	DIMENSIONS (L x W x H)	DRY WEIGHT (LBS)	TANK WARRANTY
THF00995ORC	995 GAL	94" x 60" x 63"	435	10 Years
THF01600ORC	1,600 GAL	130" x 71" x 59"	590	10 Years
THF02200ORC	2,200 GAL	130" x 71" x 72"	770	10 Years
THF03000ORC	3,000 GAL	130" x 86" x 91"	1,200	10 Years
THF04500ORC	4,500 GAL	179" x 95" x 84"	1,870	10 Years

OPTIONS



7.5" BAFFLE BALLS
PRODUCT CODE: AVB195





“When we began comparing brine-making and applications systems, Camion Systems distinguished itself in several key areas: equipment reliability, system simplicity, customer support, and integration with municipal operations.”

Tyler Jarvis

Deputy Highway Superintendent
Peru, NY



BRINE STORAGE TANK



The Snowfighter's Storage Tank

These tanks keep your brine ready for the call. That's why we beefed up our Brine Storage Tanks with tough premium features. Built by snowfighters, for snowfighters, the Camion® Brine Storage Tank is built to withstand the harshest conditions.

ANCHOR-POINT LUGS

Four hefty built-in lifting and tie-down points at each corner make it easy to handle.

STRONG-X ROOF DESIGN

The bulked-up roof structure with molded-in truss-like supports eliminate collapsing.

CORRODE-PROOF MATERIAL

Built with salt brine compliant material, this tank will keep the brine pure.

RUST-ARMOUR FITTINGS

No rust. No corrosion. Years of unmatched service.

RIBBED-WALL STRUCTURE

The ribs act like belts around the tank, keeping it in shape. This reduces bulging.



BRINE STORAGE TANK

SPECIFICATIONS

PRODUCT CODE	SIZE	DIMENSIONS (L x W x H)	DRY WEIGHT (LBS)	TANK WARRANTY
THV01100GYC	1,100 GAL	60" x 97"	210	10 Years
THV03000GYC	3,000 GAL	90" x 125"	550	10 Years
THV05000GYC	5,000 GAL	110" x 150"	1,210	10 Years
THY05200GYC	5,200 GAL	100" x 164"	1,212	10 Years
THV10000GYC	10,000 GAL	144" x 178"	2,800	10 Years

SIZES



1,100 GAL

PRODUCT CODE:
THV01100GYC



3,000 GAL

PRODUCT CODE:
THV03000GYC



5,000 GAL

PRODUCT CODE:
THV05000GYC



5,200 GAL

PRODUCT CODE:
THY05200GYC



10,000 GAL

PRODUCT CODE:
THV10000GYC



RELOCATABLE BRINE STORAGE



Your On-Site Brine Depot

Staging your brine on site can save your trucks valuable refilling time when moments matter. Our relocatable storage trailer makes it easy to safely store brine when and where you need it, without the setup of more permanent tanks.

AUTO-DRAIN CONE BASE

The 15° cone base channels every ounce of liquid to the drain. No more cleaning.

STRONG-X ROOF DESIGN

The bulked-up roof structure with molded-in truss-like supports eliminate collapsing.

CORRODE-PROOF MATERIAL

Built with salt brine compliant material, this tank will keep the brine pure.

HEAVY-DUTY TUBE FRAME

This unit is powder-coated and ready for abuse. All wires are protected inside the tubes and built-in hose holders are included.

DROP & RAISE TECHNOLOGY

The unique jacking system is simple to pump and is placed at the perfect height.

RIBBED-WALL STRUCTURE

The ribs act like belts around the tank, keeping it in shape. This reduces bulging.



RELOCATABLE BRINE STORAGE

SPECIFICATIONS

PRODUCT CODE	SIZE	NUMBER OF TANKS	DIMENSIONS (L x W x H)	TANK WARRANTY
IMWC6000	6,000 GAL	2 Tanks	21' x 100" x 146" - 158"	10 Years
IMWC9000	9,000 GAL	3 Tanks	29' x 100" x 146" - 158"	10 Years

SIZES



6,000 GAL

PRODUCT CODE: IMWC6000



9,000 GAL

PRODUCT CODE: IMWC9000



DIESEL FUEL BOSS®



Outlast The Storm

When you're in the elements, you stop for no one. The all-in-one Diesel Fuel Boss refueling unit keeps you on scene long after everyone else has gone home. Equipped with a pump, hose, and gun, our pre-built design is ready to work right out of the box.

PUMP-SHIELD COVER

The pump and gun are protected under a weather-safe cover.

CONDENSATE-ARMOUR MATERIAL

Unlike steel and aluminum, this polyethylene material reduces condensation build-up to minimize machinery filter damage.

ANCHOR-POINT STRAP GROOVES

Heavy-duty, never-fail strap grooves are built-in on both sides. This makes tying down this unit quick and hassle-free.

ANTI-SPILL BREATHER

The leak-proof poly breather keeps diesel in and dust out.

EASY-LIFT HANDLES

Molded-in, solid handles make loading and unloading this unit effortless.

SELF-ACTIVATE SHUT-OFF NOZZLE

This well-built diesel fuel nozzle is engineered to shut-off automatically when the machine is completely full.



DIESEL FUEL BOSS

SPECIFICATIONS

PRODUCT CODE	TANK SIZE (GAL)	DIMENSIONS (L x W x H)	FILL POINT	PUMP	GUN	FLOW RATE (GPM)	ELECTRIC CABLE LENGTH	HOSE LENGTH	DRY WEIGHT (LBS)
RDU025C10DC	25	32" x 27" x 20"	3"	VANE	AUTO SHUT-OFF	10	16'	16'	69
RDU055C10DC	55	32" x 27" x 30"	3"	VANE	AUTO SHUT-OFF	10	16'	16'	80
RDU075N10DC	75	51" x 21" x 31"	3"	VANE	AUTO SHUT-OFF	10	16'	16'	90
RDU100S10DC	100	47" x 34" x 34"	3"	VANE	AUTO SHUT-OFF	10	16'	16'	100

SIZES



25 GAL

PRODUCT CODE:
RDU025C10DC



55 GAL

PRODUCT CODE:
RDU055C10DC



75 GAL

PRODUCT CODE:
RDU075N10DC



100 GAL

PRODUCT CODE:
RDU100S10DC





CAMION[®]
MEGASTORE



MEGASTORES

Whether you need in-person equipment consultations or on-the-ground support for existing equipment, your local Camion[®] dealer is your go-to resource.

Visit: www.camionsystems.com/buying-options to get started.

INFORMATION

FREIGHT

Contact us to learn the exact freight charges in your area.

WARRANTY

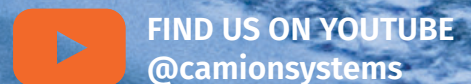
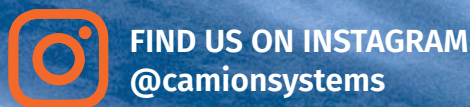
When a storm hits, lives depend on the equipment you choose. We engineered our rugged line of brine makers, storage solutions, and sprayers to give you the edge you need when the city is counting on you to keep roads open, and we back what we build.

Camion® equipment is backed by a one-year warranty and all poly storage and sprayer tanks are covered by a 10-year warranty when you register your product.

Visit www.camionsystems.com/policies to read our entire policy and register your products.

The following are registered (®) or unregistered (™) trademarks of Premia Group, A Tank Holding Corporation: CAMION®, ICE MASTER SYSTEMS®, ENDURAPLAS®, BE A MASTER™, BRINE MASTER®, FUEL BOSS®, LIQUID MASTER®, BAFFLE-BALL™, AUTO-DRAIN™, SOLID-WALL™, POLY-FLEX™, RUST-ARMOUR™, TIME-SAVER™, EASY-ADJUST™, FAST-FILL™, TRI-ZONE™, RAPID-EMPTY™, HANDY-TAP™, ANCHOR-POINT™, STRONG-X™, CORODE-PROOF™, RIBBED-WALL™, ANTISPILL™, PUMP-SHIELD™, IMPACT-FLEX™, EASY-LIFT™, SELF-ACTIVATE™, CONDENSATE-ARMOR™, STORM COMMANDER™, POINT-LOCK™, INSTANT-SYNC™, SWIFT-ASSIST™, RUGGED-SWITCH™, BUILT FOR SNOWFIGHTING™, AIR-TETHER™, STORM FIGHTR™, IMPACT-SHIELD™.

Camion® reserves the right to change specifications, design and price of the products described in this literature without notice. Images used in this literature are pictured for display purposes only. Warranty of all products is only applicable when the product is used in accord with the operator's manual. Improper use of any equipment or accessory may cause serious or fatal injury. Read, understand and follow carefully the operator's manual before using these products.



CONQUER EVERY STORM.

